

CC Atlantique

VESSEL PARTICULARS	
Name of barge	CC Atlantique
Flag	Curacao
Port of Registry	Willemstad
Official number	40719-PEXT
Classification	100AN ballastable barge
Hull type	Steel Barge
Call Sign	PJKR
IMO Number	9562245
Year Build	2010
Builder	Yangzi Shipyard, China
GT	9,119
NT	2,735
Lightship Weight	4,023 tons
Deadweight	20,147 tons
Displacement	24,170 tons
Length Overall	122.00 m
Breadth	36.60 m
Depth	7.60 m
Min draft	1.102 m
Framespacing	2,500 mm
Ballast pump	Diesel engine driven / cap. 2 x 1,000 cbm / hr x 18m HD LIGHTSHIP
Freedeckspace abt	4,400 sqm
Strenght of Deck	15 ts/sqm



Particulars are believed to be correct but not guaranteed. Owners reserve the rights to amend the specifications without notifications. Particulars are entirely without warranty as to correctness and interested parties must inspect vessel's certificates & drawings and/or physically inspect the vessel.

LKL OCEANTRADE B.V.
Adriaen Banckerstraat 8
3115 JE Schiedam
Phone: +31 10 412 96
22
E-mail: mail@lkl.nl
www.lkl.nl

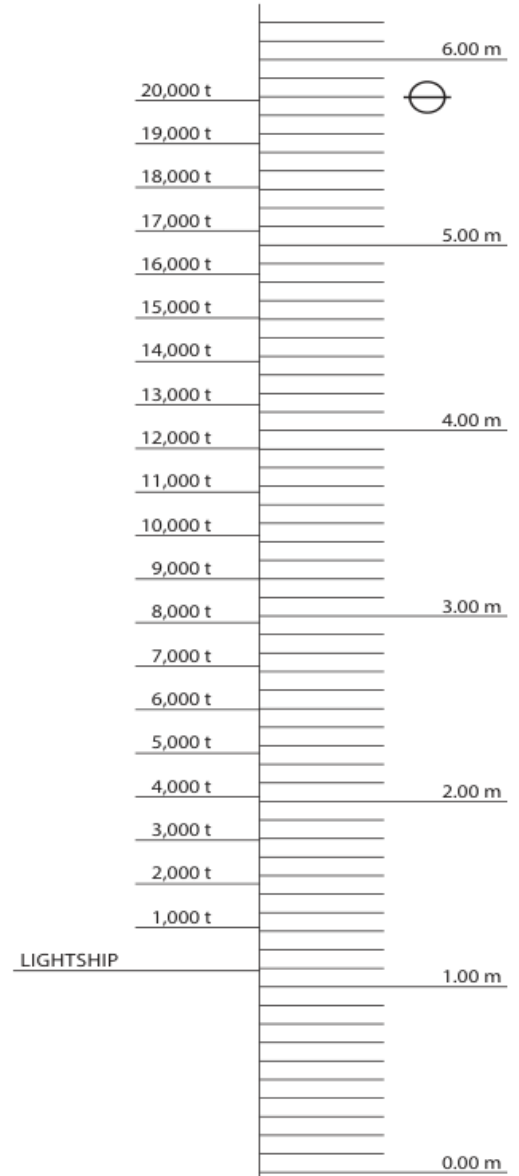


LKL Middle East Boulevard
Plaza tower 1
United Arab Emirates, Dubai
P.O. Box: 334032
Phone: +971563734526
E-mail: info@lklme.com
www.lklme.com



CC ATLANTIQUE VESSEL SPECIFICATIONS

DEAD WEIGHT SCALE



TANK NO.	TANK TYPE	FRAME NO.	CAPACITY		VCG (m) @ 98%	LCG (m) @ 98%	FSM (mt) @ 98%	VCG (m) @ 100%	LCG (m) @ 100%
			VOLUME (cu.m)	WEIGHT (mt)					
1) SEA WATER BALLAST (SG = 1.025)									
1SWB.P	NO.1 SEA WATER BALLAST	FR.42-46	546.1	557.3	4.357	48.584f	625.74	4.420	48.592f
1SWB.S	NO.1 SEA WATER BALLAST	FR.42-46	546.1	557.3	4.357	48.584f	625.74	4.420	48.592f
2SWB.P	NO.2 SEA WATER BALLAST	FR.36-42	1,008.3	1,028.9	3.770	36.467f	963.69	3.845	36.467f
2SWB.S	NO.2 SEA WATER BALLAST	FR.36-42	1,008.3	1,028.9	3.770	36.467f	963.69	3.845	36.467f
3SWB.P	NO.3 SEA WATER BALLAST	FR.30-36	1,013.8	1,034.5	3.750	21.500f	961.81	3.826	21.500f
3SWB.S	NO.3 SEA WATER BALLAST	FR.30-36	1,013.8	1,034.5	3.750	21.500f	961.81	3.826	21.500f
4SWB.P	NO.4 SEA WATER BALLAST	FR.24-30	1,013.8	1,034.5	3.750	6.500f	961.82	3.826	6.500f
4SWB.S	NO.4 SEA WATER BALLAST	FR.24-30	1,013.8	1,034.5	3.750	6.500f	961.82	3.826	6.500f
5SWB.P	NO.5 SEA WATER BALLAST	FR.18-24	1,013.8	1,034.5	3.750	8.500	961.81	3.826	8.500a
5SWB.S	NO.5 SEA WATER BALLAST	FR.18-24	1,013.8	1,034.5	3.750	8.500	961.81	3.826	8.500a
6SWB.P	NO.6 SEA WATER BALLAST	FR.12-18	1,013.8	1,034.5	3.750	23.500a	961.82	3.826	23.500a
6SWB.S	NO.6 SEA WATER BALLAST	FR.12-18	1,013.8	1,034.5	3.750	23.500a	961.82	3.826	23.500a
7SWB.P	NO.7 SEA WATER BALLAST	FR.6-12	1,013.8	1,034.5	3.750	38.500a	961.82	3.826	38.500a
7SWB.S	NO.7 SEA WATER BALLAST	FR.6-12	1,013.8	1,034.5	3.750	38.500a	961.82	3.826	38.500a
8SWB.P	NO.8 SEA WATER BALLAST	FR.0-6	810.1	826.6	4.402	52.658a	947.87	4.465	52.675a
8SWB.S	NO.8 SEA WATER BALLAST	FR.0-6	810.1	826.6	4.402	52.658a	947.87	4.465	52.675a
8SWB.C	NO.8 SEA WATER BALLAST	FR.0-6	1,590.0	1,622.5	4.381	52.685a	7.360.39	4.444	52.701a
TOTAL			20,332.1	20,747.1		20,840.4	21,265.8		

- General Notes:**
- Reference Point is Midship (1,000 mm Fwd of FR.24).
 - "a" is Aft of Midship, "f" is Fwd of Midship.

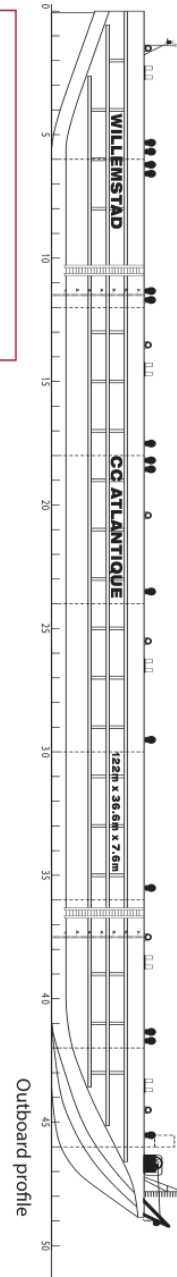
Particulars are believed to be correct but not guaranteed. Owners reserve the rights to amend the specifications without notifications. Particulars are entirely without warranty as to correctness and interested parties must inspect vessel's certificates & drawings and/or physically inspect the vessel.

LKL OCEANTRADE B.V.
 Adriaen Banckerstraat 8
 3115 JE Schiedam
Phone: +31 10 412 96
 22
E-mail: mail@lkl.nl
www.lkl.nl

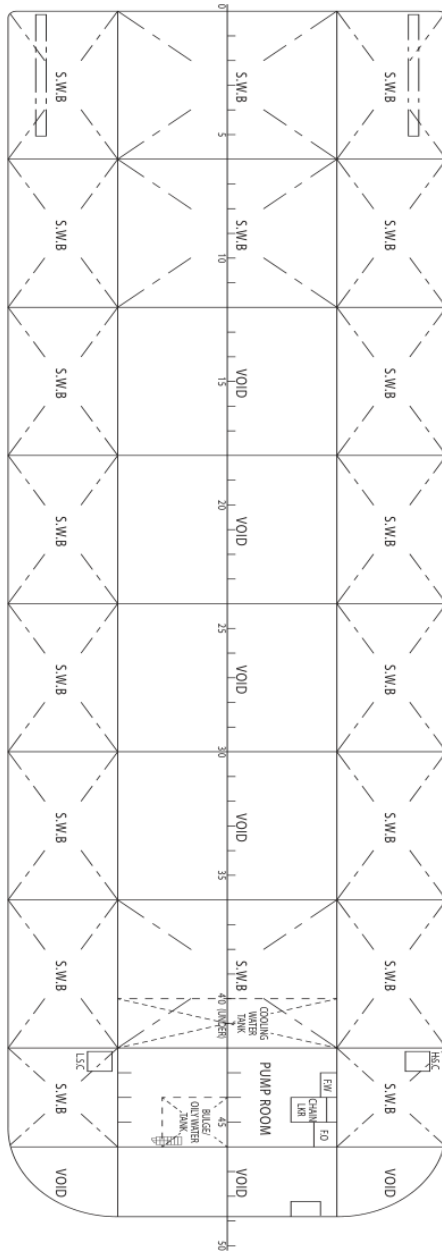


LKL Middle East Boulevard
 Plaza tower 1
 United Arab Emirates, Dubai
 P.O. Box: 334032
Phone: +971563734526
E-mail: info@lklme.com
www.lklme.com





PRINCIPAL PARTICULARS	
LENGTH O.A.	122 m
BEAM MLD.	36.60 m
DEPTH MLD.	7.60 m
DRAFT MAX.	5.803 m



Particulars are believed to be correct but not guaranteed. Owners reserve the rights to amend the specifications without notifications. Particulars are entirely without warranty as to correctness and interested parties must inspect vessel's certificates & drawings and/or physically inspect the vessel.

LKL OCEANTRADE B.V.
 Adriaen Banckerstraat 8
 3115 JE Schiedam
Phone: +31 10 412 96
 22
E-mail: mail@lkl.nl
www.lkl.nl

LKL Middle East Boulevard
 Plaza tower 1
 United Arab Emirates, Dubai
 P.O. Box: 334032
Phone: +971563734526
E-mail: info@lklme.com
www.lklme.com